



Young
Universities
for the
Future
of
Europe

www.yufe.eu
www.uni-bremen.de/en/yufe



University
of Bremen



Young Universities
for the **Future** of Europe

The University Network for the Future of Europe



University
of Bremen

Students

teaching staff

scientists

YUFE is

for everyone!

cities/regions

citizens

administrative staff

Hola

Cześć

Hallo

Hoi

Multilingualism

We promote multilingualism because we acknowledge its value!

Our common working language is English.

Hei

Hello

Salut

Bok

γεια

Diversity and inclusivity are YUFE values

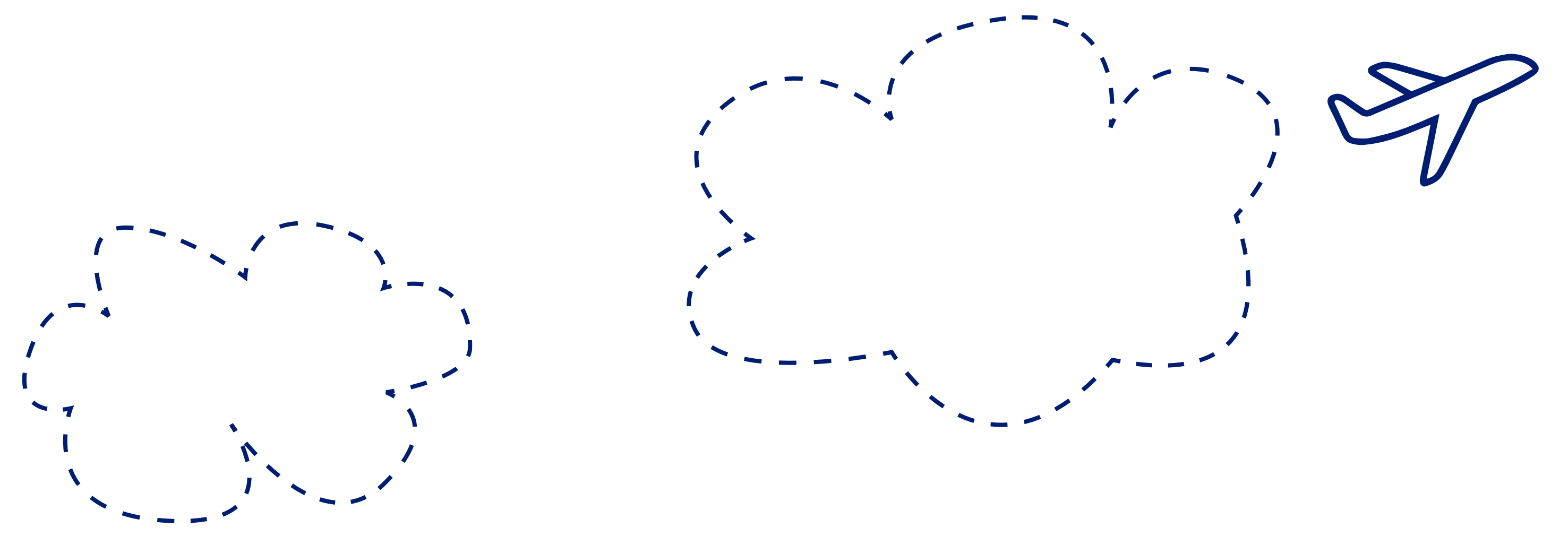
The principles of diversity and inclusivity apply within the whole YUFE Alliance.

At YUFE we promote:

- ✓ Accessibility: No one is excluded.
- ✓ Openness: Accessible to all.
- ✓ Gender-sensitive language: as neutral as possible in addressing people and in writing. We understand that gender is not binary.

At YUFE we position ourselves against:

- ✗ Bias: Tendency towards or against a person or group, especially in a way that is considered unfair.
- ✗ Othering: Creating a distance from a group whose characteristics, needs and skills are considered as special. This usually happens within a power imbalance.
- ✗ Stereotypes: A widely held but fixed and over-simplified image or idea of a particular person or group.

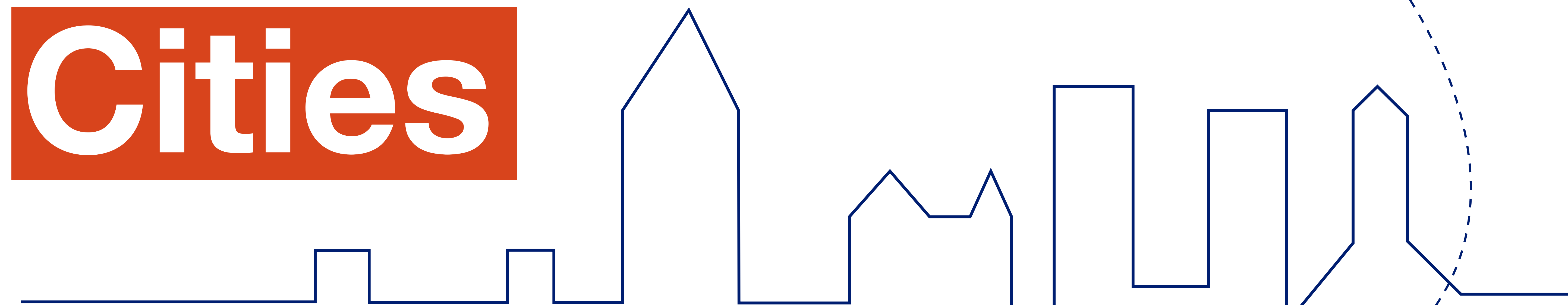


YUFE

in our

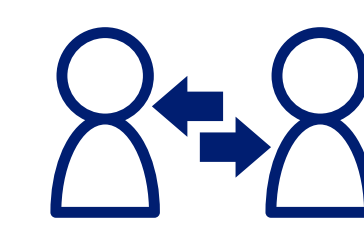
Cities

YUFE aims to jointly find possible solutions to local and European challenges through a close partnership between universities and civil societies.



Events and offers for citizens at the 10 YUFE locations

- ✓ Open lecture series and events
- ✓ „Student Clinics“: Students – supervised by researchers and lecturers – pass on the knowledge they have acquired at the university to citizens. They answer questions and offer their advice and content-related support.
- ✓ Students are supported in becoming involved in voluntary work.



YUFE Mayors' Meeting

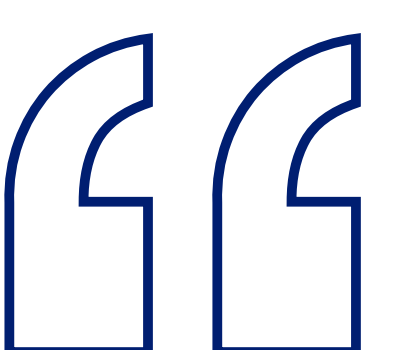
The annual meeting provides an exchange platform to strengthen the links between the YUFE partners and the political representatives of the YUFE cities. In October 2022, the Mayors' Meeting took place in Bremen.



This is exactly how I envision universities of the future: Students, researchers, and administrative staff can all build deeper networks with international partners and benefit from each other's knowledge and experience. (...)

Dr. Claudia Schilling, Senator for Science and Ports

Source: <https://www.uni-bremen.de/kooperationen/hochschulkooperationen/yufe/news/zehn-europaeische-universitaeten-treffen-sich-in-bremen-1>, retrieved on 26.09.2022





Start at the University of Bremen

Student Journey

An example of European studies in Bremen.



YUFE Induction Courses

Get to know and engage with the European YUFE values, e.g. diversity & inclusivity.



- Participation in language courses
Virtual or on site, e.g. Croatian in Rijeka
- Additional participation in language cafés,
e.g. Spanish



Attendance of academic courses

- On site, e.g. in Maastricht, Netherlands: “Digital Media and culture” and “States, Markets and European Integration”
- Additional virtual attendance of courses,
e.g. in Toruń, Poland: “World Economy Analysis”



Volunteering activities

On site, e.g. in Joensuu, Finland:
Volunteering work for LGBTQA+ rights

Various opportunities

Designing of the individual Student Journey



- Innovative study opportunities at a European University
- Flexible design of the own individual Student Journey
- Academic courses, language courses, volunteering activities, entrepreneurship, etc.
- Mobility: physically and virtual
- International fellow students

Staff

Journey

Name: Dr. Nicholas Mouttotos

Origin: Cyprus

Field of research: Law

Project: "Towards an Informed Choice of Law? Interdependencies between Substantive and Procedural Means of Consumer Protection in Private International Law."

YUFE supports academic and non-academic staff members through European career options in the form of job offers at YUFE institutions and opportunities for further education and training. In addition to supporting the career paths of non-academic staff and graduate students, YUFE also offers career perspectives for postdoctoral researchers. Herewith, we present the academic career path of Dr. Nicholas Mouttotos, a postdoc from Bremen, Germany.



Dr Mouttotos, what is a postdoc?

"As a postdoc, I have successfully completed my doctorate and I'm continuing my research as an employee of an institution (in this case, the University of Bremen). We postdocs therefore have more responsibility than the PhD students. In addition to my research work, I am also involved in teaching the master's programs."

What do you hope to accomplish during your time in Bremen?

"I would like to publish many papers during my time as a YUFE postdoc and use the mobility that YUFE allows to further expand my network. This is particularly important for my research area. For example, I was recently in Rome (at the Tor Vergata University of Rome) and was able to make more contacts and get to know the university there."



Queens University, Belfast Northern Ireland
› Erasmus Exchange

The Hague Academy of international Law, Hague, Netherlands
› Further Education

University Bremen, Germany
› YUFE Postdoc

University of Maastricht, Netherlands
› Masters Degree & PhD

National and Kapodistrias University of Athen, Greek
› Further Education

University of Nikosia, Cyprus
› Bachelor's Degree



Young Universities for the **Future** of Europe

Bis bald! Hasta luego! Tot ziens! Do zobaczenia wkrótce! Do vidjenja! Nähdään pian! See you soon! Τα λέμε σύντομα! À bientôt!

Further information

about YUFE and the developments in creating
the European University are available via:

www.yufe.eu

www.uni-bremen.de/en/yufe



Get in contact with us –
we're looking forward to hearing from you!



University
of Bremen