



YUFE4POSTDOCS

Key Information

Co-funded by the
European Union



Young Universities
for the **Future of Europe**



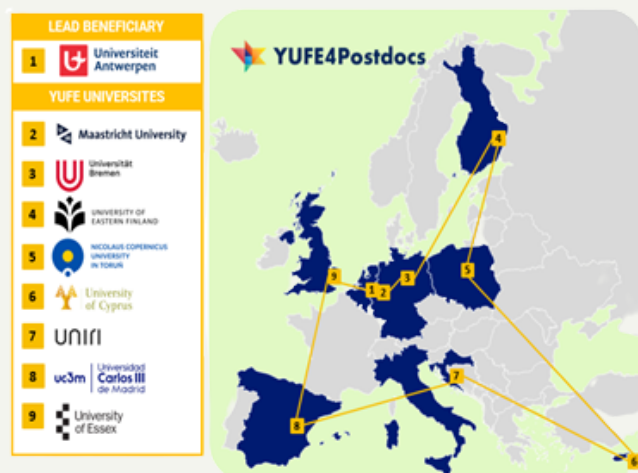
YUFE4Postdocs



Yufe4Postdocs (Y4P) is an ambitious training program co-funded by Horizon Europe's Marie Skłodowska-Curie program. It is part of the Young Universities for the Future of Europe (YUFE) Alliance, which brings together nine young research-intensive universities from across Europe.

YUFE4Postdocs aims to train future proof researchers, building bridges between academia and society. It offers longer term postdoc positions in the YUFE universities and an attractive training program including interactive stakeholder engagement seminars and a variety of joint transferable skills training sessions.

Positions are available in the nine YUFE universities: University of Antwerp, University of Eastern Finland, University of Bremen, University of Cyprus, Maastricht University, Universidad Carlos III De Madrid, University of Rijeka, Nicolaus Copernicus University and University of Essex.



YUFE4Postdocs calls

Applicants freely choose a research topic but it must address one or more societal challenges and opportunities, framed in an urban context. They then choose to define their subject within one of the YUFE focus areas.

First call

Open from
Appointment of postdocs
Nr. of positions
Focus Areas:

01/03/2023 - 07/05/2023
01/01/2024
29



Sustainability



Digital Society

Second call

Open from
Appointment of postdocs
Nr. of positions
Focus Areas:

01/10/2023 - 31/12/2023
01/09/2024
22



Citizen's wellbeing



European Identity



Information for applicants

We welcome applications in all disciplines and applicants from all over the world can apply. The call targets early career postdoctoral researchers: candidates must have obtained their PhD a maximum of 6 years before the call deadlines (experience outside of research, and career breaks, are taken into account).

Candidates must comply with the MSCA mobility rule: they must not have resided or carried out their main activity (work, studies, etc.) in the country of the prospective host university for more than 12 months in the 36 months immediately before the call deadline.

Benefits

- Attractive employment conditions: appointments with a 36 months perspective, competitive remuneration including a mobility allowance for private mobility-related costs, an intra-YUFE mobility allowance, a travel allowance and a research bench fee.
- A three-pillar training program, on community engagement, stakeholder interaction, Open Science and Open Innovation.
- Personalised supervision and career guidance: support by two supervisors (at the host and co-host university) and a non-academic mentor. The postdocs steer their Career Development Plan (CDP) as an individual roadmap.
- Implementation by an EU-wide consortium, under the coordination of University of Antwerp. In addition to the nine partner universities, a total of 16 cities, regions and business organisations are committed to supporting Y4P as Associated Partners.

Expectations

- Postdocs identify a host research group and supervisor (in the host university) and a co-host research group and co-supervisor (in the co-host university) within the YUFE universities.
- They will carry out their project in regular contact with one or more stakeholder organisations.
- They undertake an intra-YUFE mobility by spending minimum 1 and maximum of 6 months in a YUFE co-host university, as a continuous or multiple shorter stays (each of which must be a minimum of one month).



Information for supervisors and co-supervisors

Supervisors and co-supervisors should be tenured or tenure-track faculty members with at least a 10% appointment. They can support a maximum of two candidates (acting as supervisor for one postdoc and co-supervisor for another postdoc). They produce a signed commitment letter for candidate(s) as part of the application procedure.

Benefits

- Working with excellent postdocs paid by the university (or Faculty) with support from an EU grant.
- New contacts in YUFE universities, and with city and regional councils and/or business organisations.
- Visibility of their research group/department via the YUFE4Postdoc communication and dissemination activities.

Applications

Applications should be submitted via the YUFE4Postdocs application portal, that will be open from 1st March, 2023.



www.yufe4postdocs.eu

Be sure to consult the following information on the website

- Call text
- Guide for applicants
- Specific information on the host universities indicated in the Guide for Applicants. They can further contact the local Navigator in the prospective host university for information or for assistance with finding a supervisor, or co-supervisor. Contact details of Navigators are available on the YUFE4Postdocs website.

Stay in touch and receive regular updates on the YUFE4Postdocs program



yufe4postdocs@uantwerpen.be



[@AllianceYufe](https://twitter.com/AllianceYufe)



[@yufe_alliance](https://www.instagram.com/yufe_alliance)



www.facebook.com/YUFEalliance



www.linkedin.com/company/young-universities-for-the-future-of-europe/

Co-funded by the European Union

