

E. Gleichstellung

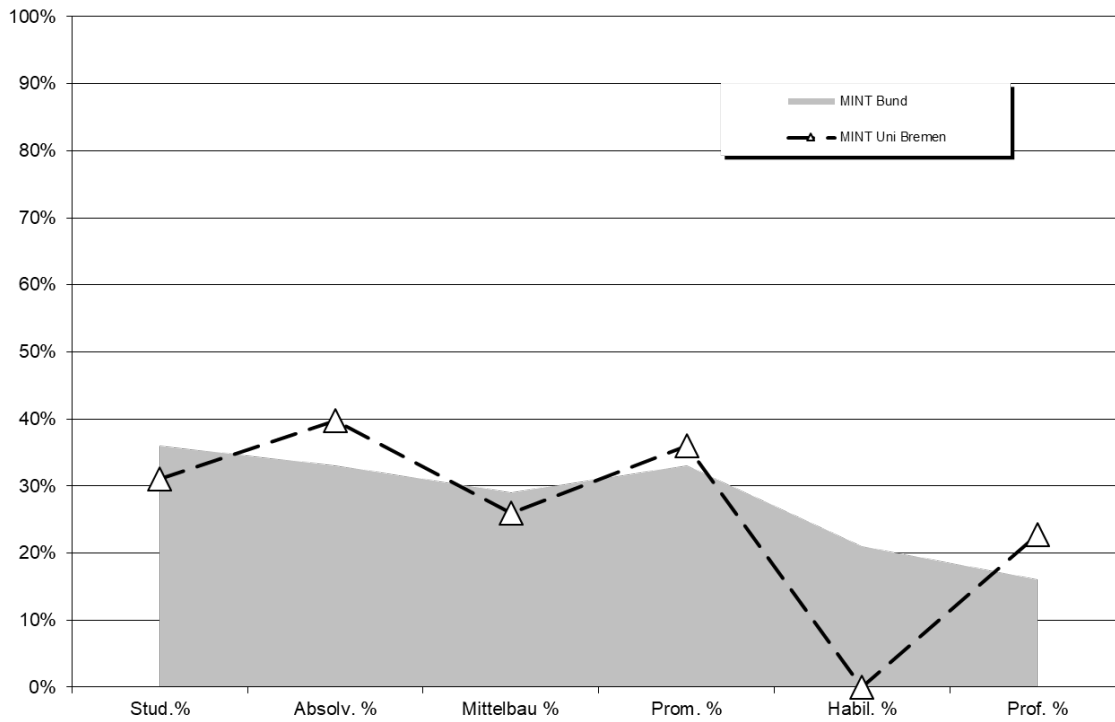
1. Kaskadenmodell: weibl. Anteile auf den verschiedenen Qualifikationsstufen

	Anteil weiblich in %					
	Stud. %	Absolv. %	Mittelbau %	Prom. %	Habil. %	Prof. %
FB 01 Physik/E-Technik	20%	18%	19%	28%		9%
FB 02 Bio/Chemie	59%	62%	44%	48%		24%
FB 03 Mathe/Informatik	29%	48%	29%	28%		34%
FB 04 Prod.technik	20%	21%	21%	25%		10%
FB 05 Geowiss.	36%	46%	29%	54%		33%
MINT Uni Bremen	31%	40%	26%	36%	0%	23%
MINT Bund	36%	33%	29%	33%	21%	16%
FB 06 Rechtswiss.	64%	64%	37%	44%		23%
FB 07 Wirtschaftswiss.	46%	45%	41%	44%		19%
FB 08 Soz./Pol.	55%	61%	50%	58%		43%
FB 09 Kulturwiss.	73%	83%	58%	73%		52%
FB 10 Sprach./Lit.wiss.	75%	83%	74%	57%		50%
FB 11 Human./Gesundheitswiss.	82%	86%	65%	77%		63%
FB 12 Erziehungswiss.	84%	81%	72%	73%		58%
GW/SW Uni Bremen	66%	71%	59%	56%	44%	44%
GW/SW Bund	62%	63%	54%	50%	41%	35%
MARUM			43%			35%
SOCIUM			47%			25%
sonstige Einheiten			50%			25%
Zentralverw.			79%			100%
Einheiten außerh. FB			49%			31%
Uni Bremen insg. (2022)	53%	56%	40%	43%	24%	32%
Bund insg. (2021)	52%	52%	35%	40%	33%	29%

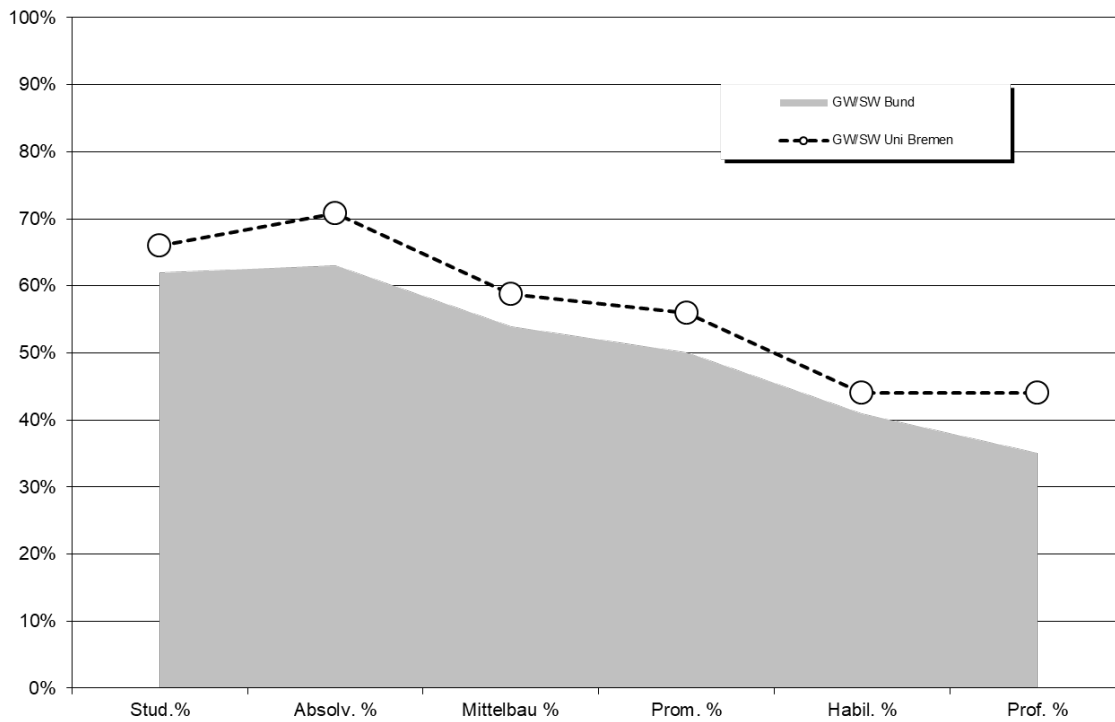
Bund-Daten: aus der Bundesstatistik (Destatis2020), bereinigt um Human-, Veterinärmedizin u. Agrarwiss.
 Promotionen und Habilitationen Uni Bremen: jeweils 3-Jahresdurchschnitt-Schnitt ('20-'22)

Fortsetzung: Kaskadenmodell

Kaskadenmodell Uni Bremen Fächergruppen im Vergleich zur Bundesstatistik



Kaskadenmodell Uni Bremen Fächergruppen im Vergleich zur Bundesstatistik



2. Studierende/Promotionen/Personal: Anteile weiblich im Zeitverlauf

a) Studierende

Fachbereich	weibliche Anteile in %						
	WS 15/16	WS 16/17	WS 17/18	WS 18/19	WS 19/20	WS 20/21	WS 21/22
FB 01	19,4%	19,8%	20,5%	22,0%	23,9%	21,3%	20,3%
FB 02	57,1%	58,5%	59,3%	59,3%	60,1%	58,9%	59,4%
FB 03	30,9%	29,6%	28,8%	29,3%	29,5%	29,1%	29,5%
FB 04	18,9%	18,4%	20,4%	20,1%	19,6%	19,3%	19,6%
FB 05	36,8%	35,4%	36,2%	34,5%	35,1%	32,3%	35,9%
FB 06	57,8%	58,4%	59,4%	60,6%	61,1%	63,6%	64,0%
FB 07	44,1%	43,6%	43,1%	42,6%	42,9%	45,8%	45,9%
FB 08	50,3%	51,5%	53,5%	53,1%	53,6%	53,1%	54,6%
FB 09	73,0%	71,7%	70,4%	70,6%	70,7%	71,0%	72,7%
FB 10	77,1%	76,5%	76,9%	76,4%	76,4%	76,2%	74,6%
FB 11	79,9%	80,5%	81,0%	81,9%	82,0%	83,5%	82,3%
FB 12	75,5%	75,5%	73,7%	74,3%	75,8%	82,4%	83,7%
o.A.	78,5%	73,6%	75,6%	75,6%	75,3%	74,7%	72,5%
Uni gesamt	51,2%	51,1%	51,8%	51,9%	52,5%	52,7%	53,1%

Fachbereich	weibliche Anteile in %						
	WS 15/16	WS 16/17	WS 17/18	WS 18/19	WS 19/20	WS 20/21	WS 21/22
FB 01 - 05	30,5%	30,1%	30,9%	31,2%	31,7%	30,6%	31,1%
FB 06 - 12	64,0%	64,1%	64,5%	64,6%	65,0%	66,1%	66,3%
Uni Ges	51,2%	51,1%	51,8%	51,9%	52,5%	52,7%	53,1%

b) Promotionen

	weibliche Anteile in %									
	2013	2014	2015	2016	2017	2018	2019	2020	2021	2022
FB 01	23,4%	27,8%	14,7%	23,1%	31,3%	22,9%	25,0%	36,7%	25,0%	24,3%
FB 02	57,1%	63,2%	63,0%	62,5%	64,7%	57,1%	56,4%	44,4%	45,5%	52,8%
FB 03	39,4%	14,7%	20,0%	28,9%	23,3%	18,4%	20,0%	15,8%	25,0%	41,9%
FB 04	3,8%	16,7%	12,5%	33,3%	21,1%	26,4%	30,3%	31,7%	19,4%	23,3%
FB 05	30,4%	43,9%	31,0%	55,2%	53,3%	54,5%	60,7%	45,2%	69,2%	57,9%
FB 06	42,1%	41,2%	56,3%	62,1%	52,4%	43,8%	66,7%	42,1%	52,6%	30,0%
FB 07	37,9%	33,3%	30,4%	17,6%	22,2%	54,2%	48,1%	36,4%	51,7%	41,2%
FB 08	52,2%	48,4%	55,6%	53,6%	53,6%	44,0%	65,4%	37,5%	63,6%	66,7%
FB 09	75,0%	77,8%	100,0%	60,0%	63,6%	72,7%	100,0%	75,0%	90,0%	50,0%
FB 10	71,4%	100,0%	87,5%	75,0%	83,3%	90,0%	60,0%	60,0%	83,3%	41,7%
FB 11	66,7%	64,7%	60,0%	59,1%	59,4%	68,2%	66,7%	78,9%	72,7%	78,6%
FB 12	50,0%	20,0%	54,5%	100,0%	71,4%	72,7%	40,0%	100,0%	50,0%	80,0%
Gesamt	41,6%	42,8%	40,3%	45,9%	45,1%	44,7%	45,5%	40,8%	44,7%	43,8%

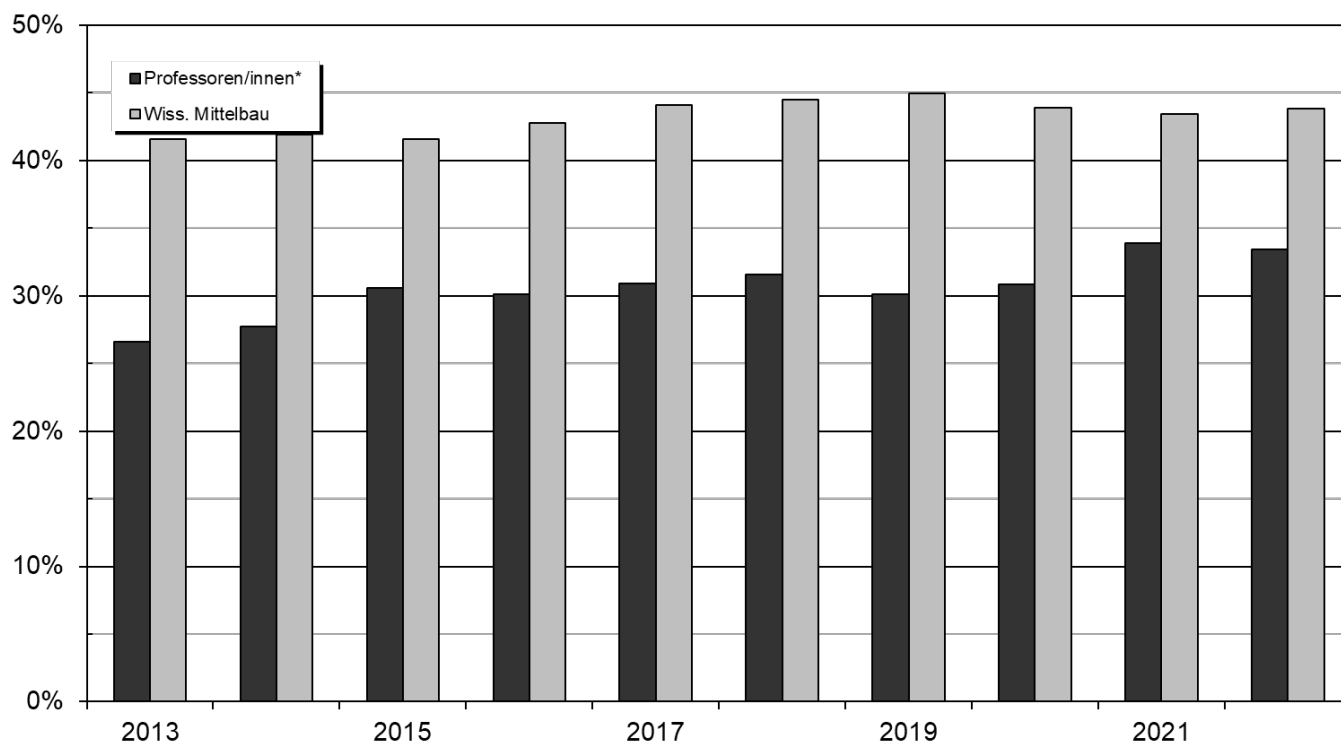
	weibliche Anteile in %									
	2013	2014	2015	2016	2017	2018	2019	2020	2021	2022
FB 01 - 05	33,7%	38,4%	31,2%	41,1%	39,7%	36,3%	37,7%	34,1%	32,4%	39,0%
FB 06 - 12	53,3%	51,8%	55,4%	54,0%	53,7%	59,7%	60,2%	53,1%	62,4%	52,9%
Gesamt	41,6%	42,8%	40,3%	45,9%	45,1%	44,7%	45,5%	40,8%	44,7%	43,8%

Fachbereiche sind über den 1. Gutachter zugeordnet.

c) Personal (Köpfe:) Weibliches Personal insgesamt (Köpfe in %) im Zeitverlauf

	2013	2014	2015	2016	2017	2018	2019	2020	2021	2022
Arbeiter/innen	38%	36%	33%	32%	31%	31%	31%	33%	38%	38%
Sekretariate	99%	99%	99%	99%	99%	99%	99%	99%	99%	98%
Techniker/innen	36%	36%	35%	33%	33%	32%	33%	33%	31%	31%
Verwaltung	77%	78%	78%	77%	78%	77%	78%	79%	79%	79%
Nichtwiss. Personal insg.	63%	64%	63%	62%	62%	62%	63%	64%	64%	64%
Professoren/innen*	27%	28%	31%	30%	31%	32%	30%	31%	34%	33%
Wiss. Mittelbau	42%	42%	42%	43%	44%	44%	45%	44%	43%	44%
Wiss. Personal insg.	40%	40%	40%	41%	42%	43%	43%	42%	42%	42%
Personal insg.	48%	48%	48%	48%	49%	49%	50%	50%	50%	50%

Anteil weiblich in %



d) Personal (VZÄ) Weibliches Personal insgesamt (Vollzeitäquivalente in %) im Zeitverlauf

	2013	2014	2015	2016	2017	2018	2019	2020	2021	2022
Arbeiter/innen	27%	26%	24%	23%	23%	24%	25%	28%	33%	32%
Sekretariate	100%	99%	99%	99%	99%	98%	99%	99%	98%	97%
Techniker/innen	31%	31%	30%	29%	29%	28%	29%	29%	27%	28%
Verwaltung	74%	75%	75%	74%	75%	74%	76%	77%	76%	76%
Nichtwiss. Personal insg.	58%	58%	58%	57%	58%	57%	59%	60%	59%	59%
Professoren/innen*	26%	28%	30%	29%	29%	30%	29%	30%	33%	32%
Wiss. Mittelbau	37%	38%	38%	38%	40%	41%	41%	40%	40%	40%
Wiss. Personal insg.	36%	36%	36%	36%	38%	39%	39%	38%	39%	39%
Personal insg.	43%	44%	44%	44%	45%	45%	46%	46%	46%	46%

Fortsetzung: weiblicher Anteil in % Personal (VZÄ)

Wissenschaftlicher Mittelbau

	2011	2012	2013	2014	2015	2016	2017	2018	2019	2020	2021	2022
FB 01	17%	19%	18%	17%	19%	18%	18%	20%	20%	21%	21%	19%
FB 02	49%	49%	48%	49%	50%	43%	42%	39%	37%	39%	42%	44%
FB 03	25%	24%	26%	25%	22%	26%	29%	30%	26%	27%	28%	29%
FB 04	25%	26%	22%	19%	22%	19%	22%	23%	21%	20%	20%	21%
FB 05	25%	26%	26%	29%	29%	27%	31%	36%	43%	39%	37%	29%
IW/NW	25%	26%	25%	25%	25%	24%	26%	27%	26%	26%	26%	26%
FB 06	42%	45%	44%	44%	41%	41%	40%	40%	43%	45%	43%	37%
FB 07	32%	32%	32%	32%	33%	36%	36%	39%	40%	41%	42%	41%
FB 08	48%	40%	46%	54%	46%	50%	49%	51%	51%	51%	53%	50%
FB 09	51%	50%	51%	51%	54%	52%	56%	59%	59%	57%	59%	58%
FB 10	68%	71%	68%	71%	72%	75%	72%	74%	75%	82%	76%	74%
FB 11	59%	56%	61%	58%	59%	63%	69%	68%	68%	70%	67%	65%
FB 12	67%	64%	66%	69%	73%	74%	74%	71%	71%	75%	71%	72%
GW/SW	54%	52%	53%	55%	55%	57%	58%	59%	60%	62%	60%	59%
MARUM		35%	38%	38%	33%	39%	41%	39%	40%	37%	38%	43%
SOCIUM		} 46%	46%	46%	51%	47%	48%	46%	48%	46%	48%	50%
sonstige Einheiten	41%		61%	59%	69%	69%	82%	84%	85%	75%	75%	79%
Zentralverw.	69%	72%	61%	59%	69%	69%	82%	84%	85%	75%	75%	79%
Einheiten außerh. FB	42%	44%	44%	44%	44%	45%	48%	47%	48%	45%	46%	49%
Insgesamt	37%	37%	37%	38%	38%	38%	40%	41%	41%	40%	40%	40%

Prof (inkl. Junior)

	2011	2012	2013	2014	2015	2016	2017	2018	2019	2020	2021	2022
FB 01	6%	6%	6%	6%	9%	6%	6%	9%	9%	9%	12%	9%
FB 02	17%	16%	18%	18%	20%	20%	19%	21%	23%	23%	24%	24%
FB 03	27%	25%	25%	30%	28%	33%	31%	30%	29%	29%	30%	34%
FB 04	5%	5%	5%	4%	9%	9%	9%	8%	9%	9%	14%	10%
FB 05	19%	22%	20%	22%	22%	23%	18%	24%	25%	26%	33%	33%
IW/NW	15%	15%	15%	17%	18%	19%	18%	19%	19%	19%	23%	23%
FB 06	43%	31%	25%	14%	13%	18%	13%	12%	18%	19%	13%	23%
FB 07	7%	6%	6%	16%	17%	15%	10%	20%	17%	18%	23%	19%
FB 08	37%	41%	44%	47%	49%	47%	48%	58%	48%	44%	48%	43%
FB 09	47%	55%	55%	52%	60%	64%	63%	60%	43%	57%	58%	52%
FB 10	44%	44%	39%	39%	52%	50%	52%	47%	48%	50%	50%	50%
FB 11	43%	46%	45%	53%	53%	41%	41%	47%	41%	47%	56%	63%
FB 12	56%	50%	47%	50%	50%	41%	40%	39%	49%	56%	61%	58%
GW/SW	40%	40%	39%	40%	43%	40%	40%	42%	38%	41%	45%	44%
MARUM		42%	29%	30%	33%	33%	45%	45%	53%	53%	35%	35%
SOCIUM		} 17%		26%	40%	38%	100%	20%	38%	36%	33%	25%
sonstige Einheiten	17%			26%	40%	38%	50%	43%	25%	20%	33%	25%
Zentralverw.												100%
Einheiten außerh. FB	15%	20%	16%	26%	33%	33%	48%	36%	38%	35%	32%	31%
Insgesamt	26%	26%	26%	28%	30%	29%	29%	30%	29%	27%	33%	32%

e) Habilitationen

	weibliche Anteile in %									
	2013	2014	2015	2016	2017	2018	2019	2020	2021	2022
NW	33%						25%			
GW	63%	100%	57%	63%	40%	80%	33%		50%	100%
Gesamt	55%	33%	57%	33%	24%	57%	29%	32%	22%	50%

