

E. Gleichstellung

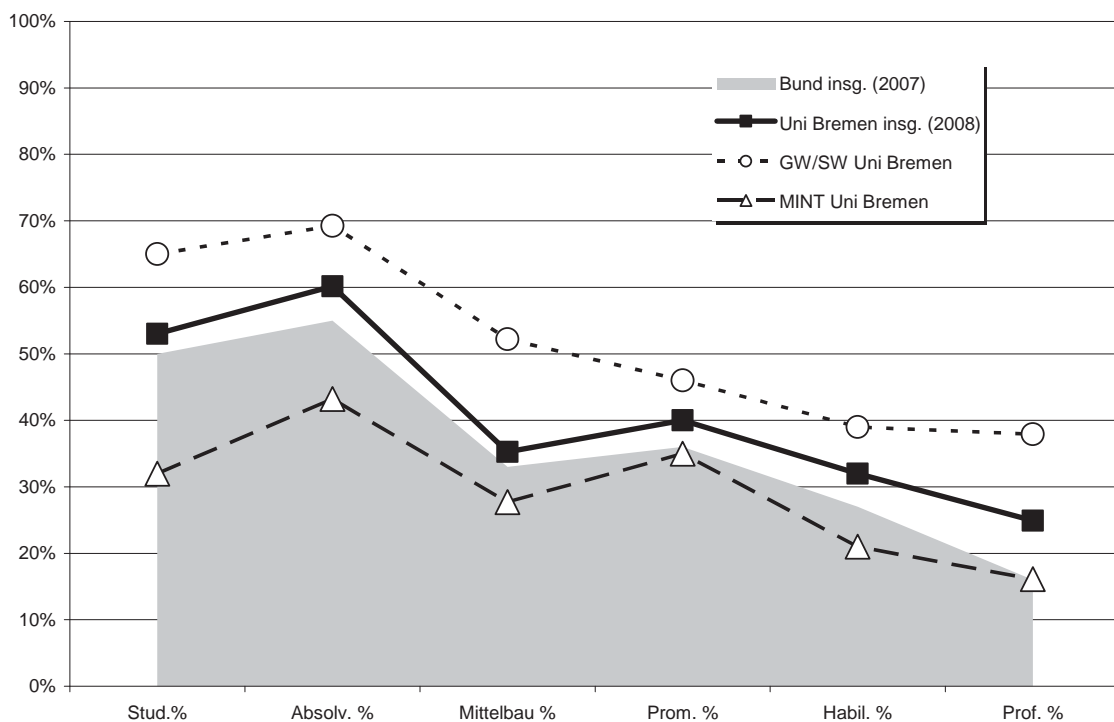
1. Kaskadenmodell: weibl. Anteile auf den verschiedenen Qualifikationsstufen

	Anteil weiblich in %					
	Stud. %	Absolv. %	Mittelbau %	Prom. %	Habil. %	Prof. %
FB 01 Physik/E-Technik	16%	17%	22%	17%		9%
FB 02 Bio/Chemie	62%	71%	48%	53%		25%
FB 03 Mathe/Informatik	32%	41%	28%	19%		23%
FB 04 Prod.technik	18%	23%	23%	16%		5%
FB 05 Geowiss.	43%	51%	30%	46%		7%
MINT Uni Bremen	32%	43%	28%	35%	21%	16%
FB 06 Rechtswiss.	59%	54%	44%	47%		33%
FB 07 Wirtschaftswiss.	46%	45%	31%	35%		0%
FB 08 Soz./Pol.	51%	59%	47%	49%		45%
FB 09 Kulturwiss.	68%	69%	50%	51%		45%
FB 10 Sprach./Lit.wiss.	78%	85%	66%	43%		40%
FB 11 Human./Gesundheitsw.	79%	80%	55%	57%		38%
FB 12 Erziehungswiss.	75%	75%	63%	57%		56%
GW/SW Uni Bremen	65%	69%	52%	46%	39%	38%
sonstige Einheiten			34%			8%
Zentralverw.			48%			0%
Einheiten außerh. FB			34%			7%
Uni Bremen insg. (2008)	53%	60%	35%	40%	32%	25%
Bund insg. (2007)	50%	55%	33%	36%	27%	16%

Promotionen und Habilitationen: jeweils 3-Jahresdurchschnitt-Schnitt ('06-'08)

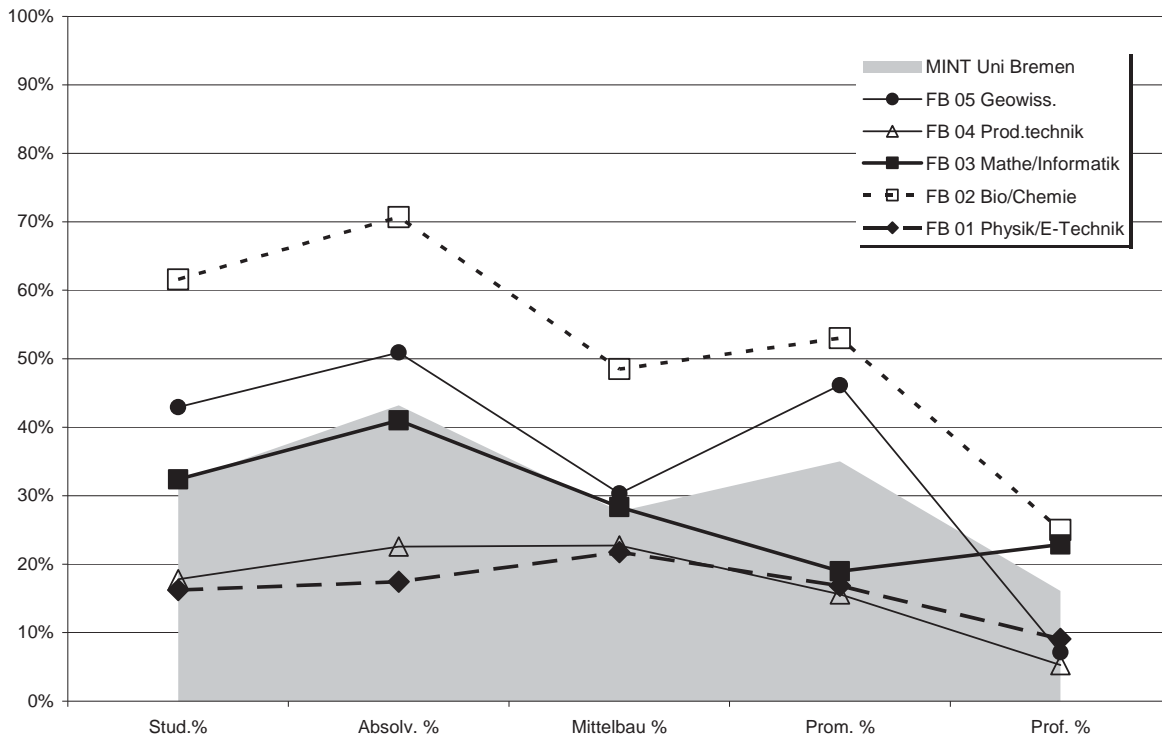
Bund-Daten: aus der Bundesstatistik (Destatis2007), bereinigt um Human-, Veterinärmedizin u. Agrarwiss.

Kaskadenmodell Uni Bremen Fächergruppen im Vergleich zur Bundesstatistik

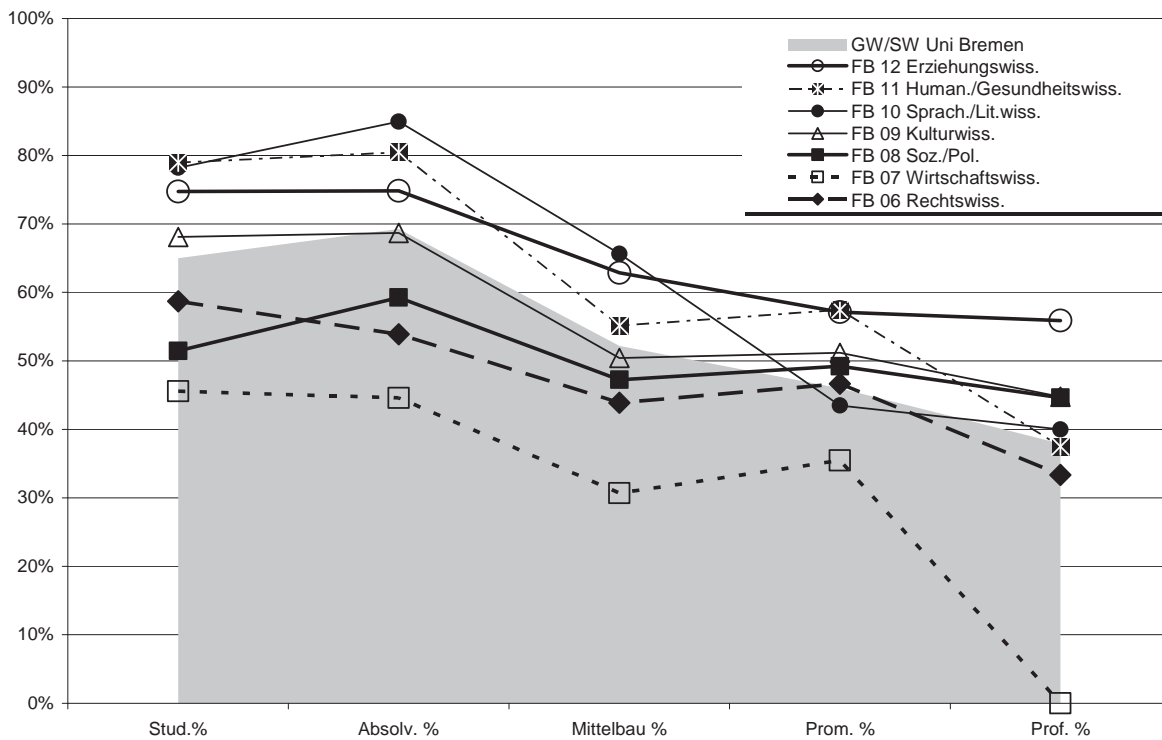


Fortsetzung: Kaskadenmodell

Kaskadenmodell Mathe/Informatik/Naturwiss./Technik (MINT)



Kaskadenmodell Geistes-u. Sozialwissenschaften (GW/SW)



2. Studierende/Promotionen/Personal: Anteile weiblich im Zeitverlauf

a) Studierende

Fachbereich	weibliche Anteile in %			
	WS 05/06	WS 06/07	WS 07/08	WS 08/09
FB 01	15%	15%	15%	16%
FB 02	61%	61%	62%	62%
FB 03	31%	31%	32%	32%
FB 04	19%	18%	18%	18%
FB 05	43%	45%	45%	43%
FB 06	53%	55%	57%	59%
FB 07	44%	46%	45%	46%
FB 08	52%	51%	51%	51%
FB 09	62%	64%	67%	68%
FB 10	76%	77%	78%	78%
FB 11	76%	80%	80%	79%
FB 12	74%	74%	77%	75%
o.A.	74%	78%	77%	81%
Uni gesamt	52%	53%	53%	53%

Fachbereich	weibliche Anteile in %			
	WS 05/06	WS 06/07	WS 07/08	WS 08/09
FB 01 - 05	33%	32%	32%	32%
FB 06 - 12	61%	63%	64%	65%
Uni Ges	52%	53%	53%	53%

ausführliche Detaildaten auf den jeweiligen Fachbereichsseiten; siehe Teil III in diesem Heft

b) Promotionen

	2005				2006				2007				2008				3-Jahres-durchschnitt '06-'08			
	m	w	Ges	w in %	m	w	Ges	w in %	m	w	Ges	w in %	m	w	Ges	w in %	m	w	Ges	w in %
FB 01	27	8	35	23%	30	3	33	9%	31	8	39	21%	18	5	23	22%	26	5	32	17%
FB 02	30	22	52	42%	28	42	70	60%	26	24	50	48%	32	31	63	49%	29	32	61	53%
FB 03	10	2	12	17%	15	2	17	12%	16	1	17	6%	16	8	24	33%	16	4	19	19%
FB 04	9	1	10	10%	19	4	23	17%	22	3	25	12%	13	3	16	19%	18	3	21	16%
FB 05	7	15	22	68%	14	10	24	42%	7	9	16	56%	14	11	25	44%	12	10	22	46%
FB 06	13	14	27	52%	16	13	29	45%	15	11	26	42%	17	18	35	51%	16	14	30	47%
FB 07	14	13	27	48%	20	9	29	31%	15	10	25	40%	25	14	39	36%	20	11	31	35%
FB 08	12	10	22	45%	7	9	16	56%	12	14	26	54%	14	9	23	39%	11	11	22	49%
FB 09	2	5	7	71%	6	9	15	60%	7	9	16	56%	8	4	12	33%	7	7	14	51%
FB 10	4	1	5	20%	2	6	8	75%	9	1	10	10%	2	3	5	60%	4	3	8	43%
FB 11	9	10	19	53%	6	12	18	67%	6	6	12	50%	8	9	17	53%	7	9	16	57%
FB 12	2	2	4	50%	5	2	7	29%	1	4	5	80%	0	2	2	100%	2	3	5	57%
Gesamt	139	103	242	43%	168	121	289	42%	167	100	267	37%	167	117	284	41%	167	113	280	40%

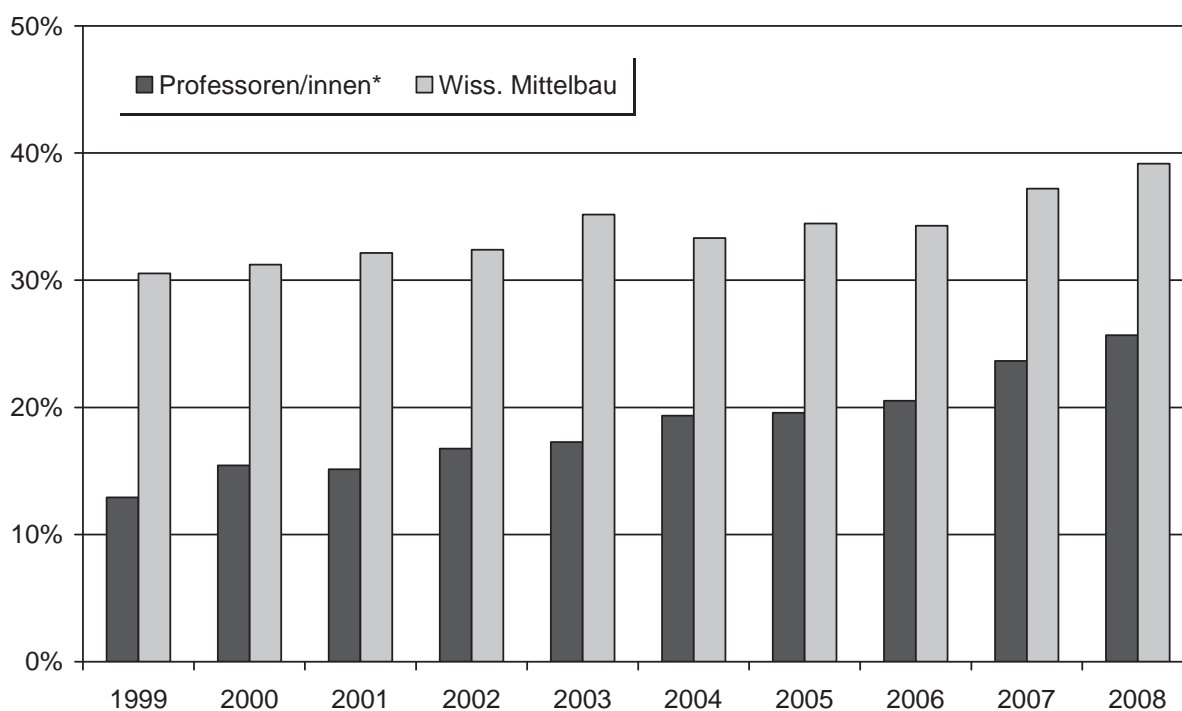
	2005				2006				2007				2008				3-Jahres-durchschnitt '06-'08			
	m	w	Ges	w in %	m	w	Ges	w in %	m	w	Ges	w in %	m	w	Ges	w in %	m	w	Ges	w in %
FB 01 - 05	83	48	131	37%	106	61	167	37%	102	45	147	31%	93	58	151	38%	100	55	155	35%
FB 06 - 12	56	55	111	50%	62	60	122	49%	65	55	120	46%	74	59	133	44%	67	58	125	46%
Gesamt	139	103	242	43%	168	121	289	42%	167	100	267	37%	167	117	284	41%	167	113	280	40%

c) Personal (Köpfe:) Weibliches Personal insgesamt (Köpfe in %) im Zeitverlauf

	1999	2000	2001	2002	2003	2004	2005	2006	2007	2008
Arbeiter/innen	55%	53%	51%	50%	47%	48%	46%	46%	43%	42%
Sekretariate	99%	100%	100%	100%	100%	100%	100%	100%	100%	100%
Techniker/innen	34%	36%	37%	38%	36%	37%	38%	38%	37%	37%
Verwaltung	71%	73%	72%	73%	75%	75%	74%	74%	75%	75%
Nichtwiss. Personal insg.	63%	64%	64%	64%	64%	64%	64%	63%	64%	63%
Professoren/innen*	13%	15%	15%	17%	17%	19%	20%	21%	24%	26%
Wiss. Mittelbau	31%	31%	32%	32%	35%	33%	34%	34%	37%	39%
Wiss. Personal insg.	27%	28%	29%	29%	32%	31%	32%	32%	35%	37%
Personal insg.	42%	42%	43%	43%	44%	44%	45%	45%	47%	47%

* Koop. Prof enthalten

Anteil weiblich in %



d) Personal (VZÄ) Weibliches Personal insgesamt (Vollzeitäquivalente in %) im Zeitverlauf

	1999	2000	2001	2002	2003	2004	2005	2006	2007	2008
Arbeiter/innen	42%	41%	40%	39%	36%	35%	33%	33%	31%	30%
Sekretariate	99%	99%	100%	100%	100%	100%	100%	100%	100%	100%
Techniker/innen	28%	30%	32%	32%	30%	31%	32%	32%	31%	31%
Verwaltung	67%	70%	68%	70%	72%	72%	71%	70%	72%	72%
Nichtwiss. Personal insg.	56%	58%	58%	58%	58%	58%	58%	57%	58%	57%
Professoren/innen*	13%	15%	15%	16%	17%	19%	19%	20%	23%	25%
Wiss. Mittelbau	28%	28%	29%	29%	32%	30%	31%	31%	33%	35%
Wiss. Personal insg.	24%	25%	26%	26%	29%	28%	28%	29%	31%	33%
Personal insg.	37%	38%	38%	38%	40%	40%	40%	40%	42%	42%

* Koop. Prof enthalten