



# MAPEX Doctoral Qualification Programme

## Extending opportunities by participating to the YUFE Pilot Programme on Doctoral Learning

Beyond the existing and extensive offers of the MAPEX Doctoral Qualification Programme a newly starting cooperation with the YUFE Pilot Programme provides you additional opportunities to attend internationally organised training activities (non-discipline specific) and network with other doctoral candidates across Europe. There will be no compulsory elements.

### What is YUFE and its Programme on Doctoral Learning about?

YUFE (Young Universities for the Future of Europe) is based on the joint vision of ten young research-intensive universities and two non-academic partners in order to contribute to a more competitive, innovative and united Europe. YUFE is piloting a **joint doctoral training programme** that is based on the YUFE DIOSI Model for Doctoral Learning (DIOSI Developing and Implementing hands-on training on Open Science and Open Innovation). The MAPEX Doctoral Qualification Programme and YUFE will cooperate to pilot this newly developed programme.

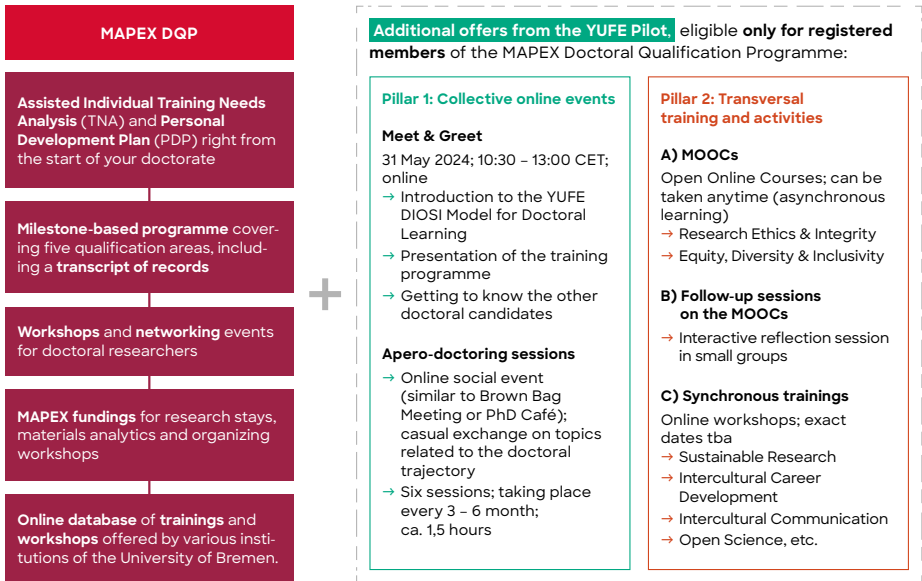
### How do you benefit from this cooperation in addition to the offers within the MAPEX Doctoral Qualification Programme?

- Visit internationally organised non-discipline specific training sessions (e.g. Sustainable Research, Intercultural Career Development, Intercultural Communication, Open Science) taking place between May 2024 and October 2025.
- Network and connect with other doctoral candidates across Europe.
- All courses in which you participate will be listed in your MAPEX ToR

### Evaluation of the programme

As this is a pilot programme, there will be **two online surveys** in order to evaluate the success of the programme. The initial survey will take place in June and October 2024. The follow up survey will be in October 2025. **Participants are urged to complete both of these surveys.**

# Overview of the additional YUFE offers within the framework of the MAPEX Doctoral Qualification Programme



## Who can join and how to participate?

By registration and membership in the MAPEX Doctoral Qualification Programme you are **automatically eligible** to take part in the YUFE Pilot Programme on Doctoral Learning and can benefit from its additional offers.

As a registered member of the MAPEX Doctoral Qualification Programme you will receive regular e-mails with details on how to access the forthcoming YUFE workshops and activities directly through YUFE.



Dr. Enis Bicer  
MAPEX Education Manager /  
Coordinator MAPEX  
Doctoral Qualification Programme  
mapexphd@uni-bremen.de  
Phone: +49 421 218 – 64585



[www.uni-bremen.de/en/mapex/career/doctoral-qualification-programme](http://www.uni-bremen.de/en/mapex/career/doctoral-qualification-programme)



Charlotte Simmat  
Universität Bremen  
Administrative Unit 12 – Research  
and Early-Career Researchers  
charlotte.simmat@vw.uni-bremen.de  
Phone: +49 421 218 – 60347



<https://yufe.eu/yufe-approach-to-doctoral-and-postdoctoral-training/#doc3>